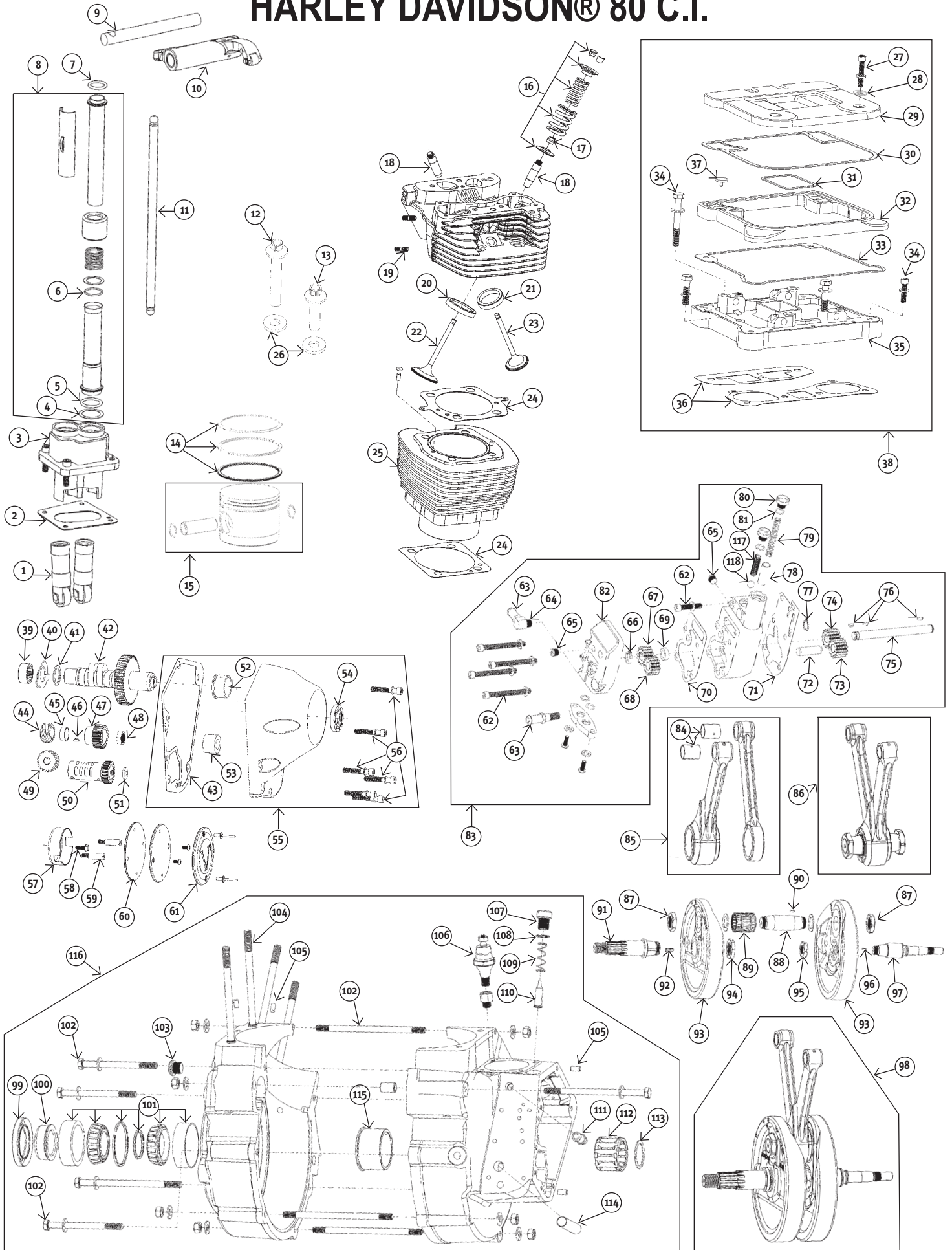


HARLEY DAVIDSON® 80 C.I.



HARLEY DAVIDSON® 80 C.I.

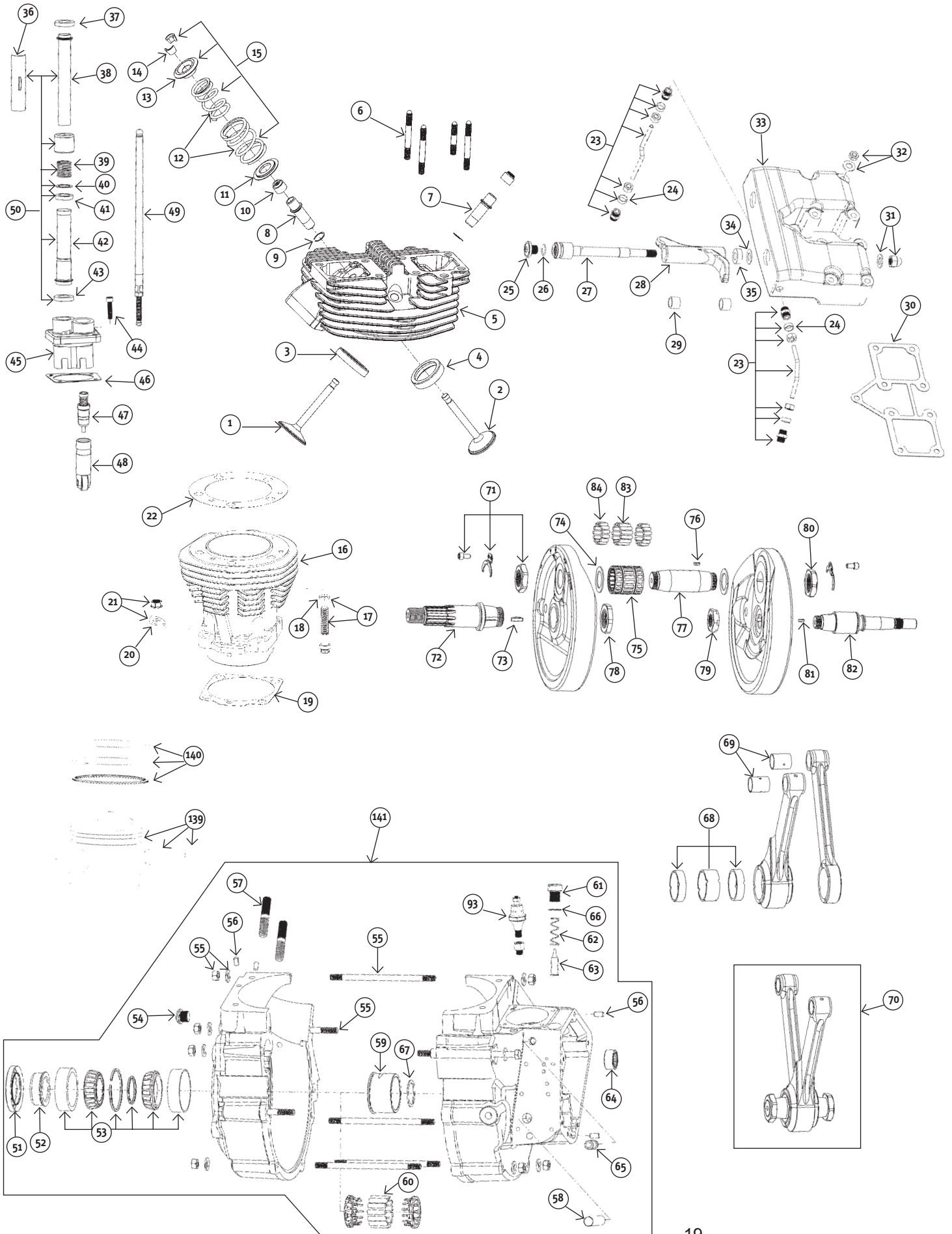
#	PART#	DESCRIPTION	OEM#	QTY	#	PART#	DESCRIPTION	OEM#	QTY
1	91-880	Ultima® lifter	18523-86	each		98-590	Pinion gear 77-89 Green	24045-78	each
2	78-374	Front tappet block gasket 84-99 Cometic	18634-48C	pkg 10		98-591	Pinion gear 77-89 Black	24046-78	each
	78-373	Rear tappet block gasket 84-99 Cometic	18633-48D	pkg 10	48	98-302	Nut, pinion gear 54-89	24023-54	each
3	91-613	Tappet block set, chrome w/hardware 84-99		set		98-458	Nut, pinion gear 90-92	24022-90	each
	91-614	Tappet block set, black w/hardware 84-99		set	49	98-358	Gear, oil pump driven 73-95 24T	26345-73	each
4	91-853	Lower pushrod washer	6737	each	50	98-512	Gear, breather std.	25313-77A	each
5	78-674	Pushrod O-ring, bottom	11145	each		98-494	Gear, breather +.030"	25313-77A	each
6	78-673	Pushrod O-ring, middle	11132	each	51	98-80	Shim, breather gear .110" 79-99	25313-77A	each
7	78-675	Pushrod O-ring, upper	11157	each		98-81	Shim, breather gear .115" 79-99	25321-79	each
8	91-775	Pushrod cover assembly chrome		each		98-82	Shim, breather gear .120" 79-99	25322-79	each
9	91-666	Rocker arm shaft	17611-83	each		98-83	Shim, breather gear .125" 79-99	25323-79	each
10	91-699	Rocker arm set		set	52	95-340	Bushing, cam	25581-70	each
11	91-795	Pushrod set, adjustable		set	53	95-341	Bushing, Pinion 73-92	25582-73	each
12	40-616	Head bolt, long	16478-85	each		95-454	Bushing, Pinion 93-99	25582-93	each
13	40-617	Head bolt, short	16480-92	each	54	95-222	Oil seal	83162-51	each
14	93-456	Piston rings. 80" std. bore		pair	55	88-53	Cam cover 73-92 w/hdwr & gasket chrome	25258-80B	each
	93-476	Piston rings. 80" +.005		pair		88-70	Cam cover 93-99 w/hdwr & gasket chrome	25266-93A	each
	93-457	Piston rings. 80" +.010		pair	56	41-131	Chrome allen cam cover bolt kit 93-99		kit
	93-458	Piston rings. 80" +.020		pair	57	53-528	Ignition rotor (gold) 84-99	32402-83	each
	93-459	Piston rings. 80" +.030		pair	58	53-529	Ignition rotor screw	2611C	each
15	93-794	Pistons, forged 80" std. bore w/pins & clips		set	59	91-352	Ignition timing/sensor screw	32606-82	each
	93-795	Pistons, forged 80" +.005" w/pins & clips		set	60	78-422	Point cover gasket 84-99	32591-80	pkg 10
	93-796	Pistons, forged 80" +.010" w/pins & clips		set	61	89-304	Point cover domed, chrome 70-99	32524-83	each
	93-797	Pistons, forged 80" +.020" w/pins & clips		set		89-114	Point cover Ultima® domed, chrome 70-99 w/hdwr & gasket	32524-83	each
	93-798	Pistons, forged 80" +.030" w/pins & clips		set	62	41-772	Oil pump bolt kit. Allen head 78-91		kit
16	91-543	Spring kit, Manley, stock to .650" lift.		kit		41-787	Oil pump bolt kit. Allen head 92-99		kit
17	91-770	Valve seal for B.T. 84-99	18001-83B	each	63	21-123	Spigot tube 84-99	63533-41	each
18	91-388	Valve guide 84-99 int. or exh. Std.	18112-92	each	64	21-185	Spigot elbow 84-99		each
	91-389	Valve guide 84-99 int. or exh. +.001"	18130-83C	each	65	98-622	Pressure plug 84-99	45830-48	each
	91-390	Valve guide 84-99 int. or exh. +.002"	18131-83C	each	66	98-325	Retaining ring 84-99	26348-36	each
	91-391	Valve guide 84-99 int. or exh. +.003"	18133-83A	each	67	98-615	Feed, drive gear 14T 84-99	26328-74	each
	91-392	Valve guide 84-99 int. or exh. +.004"		each	68	98-616	Feed, idler gear 14T 84-99	26326-62A	each
19	66-242	Exhaust stud	16715-83	each	69	95-221	Oil seal 84-99	26227-58	each
20	91-680	Valve seat, intake (2.007" O.D. 1.625" I.D. .437" tall)		each	70	78-397	Gasket, oil pump cover 84-91 paper Cometic	26276-80A	pkg 10
	91-682	Valve seat, intake (2.016" O.D. 1.625" I.D. .453" tall)		each		78-398	Gasket, oil pump cover 92-99 paper Cometic	26276-92	pkg 10
	91-681	Valve seat, intake (2.007" O.D. 1.625" I.D. .453" tall)		each	71	78-395	Gasket, oil pump base 84-91 paper Cometic	26273-80B	pkg 10
21	91-674	Valve seat, exhaust (1.7545" O.D. 1.375" I.D. .437" tall)		each		78-396	Gasket, oil pump base 92-99 paper Cometic	26273-92	pkg 10
	91-676	Valve seat, exhaust (1.819" O.D. 1.625" I.D. .453" tall)		each	72	98-618	Idler pin 84-99	26327-68	each
22	91-649	Intake valve head dia. 1.850" stock, stem dia. .310" stock.	18074-83	each	73	98-614	Return, idler gear 14T 84-99	26317-68A	each
23	91-648	Exhaust valve head dia. 1.615" stock, stem dia. .3095" stock.	18082-3	each	74	98-613	Return, drive gear 14T 84-99	26315-68A	each
24	78-246	Head & base gasket set, stock bore .030" Cometic		pair	75	98-334	Drive shaft 84-99	26346-70	each
	78-247	Head & base gasket set, stock bore .040" Cometic		pair	76	98-272	Woodruff key	26348-15	each
25	93-676	Cylinder, 80ci front or rear, 84-99 cast/natural finish	16510-83A	each	77	98-329	Retaining ring 84-99	11002	each
26	41-112	Head bolt washer kit 84-91	16482-85	kit	78	98-623	Plunger 84-99	26400-82	each
27	40-510	Stainless Rocker cover screw kit 84-99		kit	79	98-619	Plunger spring 84-99	26207-83	each
28	78-444	Fiber washer 84-99	63858-49	pkg 10	80	41-888	Oil pump cap	26263-80	each
	78-548	Copper washer 84-99		pkg 10	81	95-828	O-ring 84-99	11105	each
29	89-351	Rocker cover 84-92 chrome	17528-84A	each	82	89-238	Oil pump cover, 68-91 chrome		each
30	78-364	84-91 Upper rocker cover gasket, rubber Cometic	17356-84A	pkg 5	83	98-516	Oil pump, Ultima® 84-91 std. vol. polished w/hdwr & gskts		each
	78-365	92-99 Upper rocker cover gasket, rubber Cometic	17356-92	pkg 5		98-518	Oil pump, Ultima® 84-91 High output polished w/hdwr & gskts		each
31	78-366	84-99 Inner rocker cover gasket, rubber Cometic	17358-84A	pkg 10		98-519	Oil pump, Ultima® 84-91 High output wrinkle blk w/hdwr & gskts		each
32	89-374	Rocker box middle spacer 84-92	17510-84	each		98-515	Oil pump, Ultima® 92-99 std. vol. polished w/hdwr & gskts		each
33	78-362	84-91 Lower rocker cover gasket, rubber Cometic	17355-84A	pkg 5		98-517	Oil pump, Ultima® 92-99 High output polished w/hdwr & gskts		each
	78-363	92-99 Lower rocker cover gasket, rubber Cometic	17355-92	pkg 5		98-520	Oil pump, Ultima® 92-99 High output wrinkle blk w/hdwr & gskts		each
34	89-416	Rocker box bolt kit		kit	84	95-115	Wristpin bushing, std. size	24334-36	each
35	89-375	Bottom rocker carrier 84-92	17530-84B	each		95-389	Wristpin bushing, +.002"		each
36	78-321	2 piece gasket set with silicone bead 84-99		set	85	98-573	Con. Rods 7.440" Unfinished .7918" small end 1.6256" big end		set
37	78-205	Umbrella valve 93-99	26856-89	each	86	98-571	Rod set w/crank pin, nuts, bearings, bearing cages, .792" pin bore		set
38	89-373	84-92 Rkr box assy. Ft or Rr 3 piece OEM style w/gaskets		each	87	98-422	Crankpin nut 3/4-20	24016-80	each
	89-450	93-99 Rkr box assy. Ft or Rr 3 piece OEM style w/gaskets/hdwr		each	88	98-537	Crankpin 1.250" w/nuts & key 81-99		kit
	89-516	93-99 Rkr box assy. Ultima 2 piece solid top, Includes hdwr/gskts		set	89	95-259	Rod roller bearing set 74 & ltr		kit
	89-496	93-99 Rkr box assy. 2 piece w/hole in center, Includes hdwr/gskts		set	90	98-475	Crankpin key	23985-18	kit
39	95-173	Cam bearing	9058	each	91	98-339	Sprocket shaft 81 & ltr		each
40	98-372	Washer, cam thrust	25550-57	each	92	94-137	Woodruff key	11218	each
41	98-375	Cam shim .055" 84-99	25551-36	each	93	98-650	Flywheels machined, unbalanced 4.250 stroke 5 piece		pair
	98-376	Cam shim .060" 84-99	25552-36	each	94	98-539	Sprocket shaft nut 1-1/8-16	24017-80	each
	98-377	Cam shim .065" 84-99	25553-36	each	95	98-422	Pinion shaft nut	24016-80	each
	98-378	Cam shim .070" 84-99	25554-36	each	96	98-475	Woodruff key	11218	each
	98-379	Cam shim .075" 84-99	25555-36	each	97	98-546	Pinion shaft 81-99 long nose		each
	98-380	Cam shim .080" 84-99	25556-36	each	98	98-552	Crank assembly 4.250 stroke 84-99		assy.
42	114-46	Camshaft, bolt in, Andrews EV13 84-99		each	99	95-805	Oil seal	12026	each
	114-52	Camshaft, bolt in, Andrews EV27 84-99		each	100	98-360	Sprocket shaft spacer 71-99	24002-70	each
43	78-378	Gasket, cam cover 84-92 Cometic		pkg 5	101	95-320	Bearing & race set	9028	set
	78-379	Gasket, cam cover 93-99 Cometic		pkg 5	102	41-882	Motor case bolt/stud kit 79-95 chrome		kit
44	98-359	Gear, oil pump drive 54-89	26349-73	each		41-142	Motor case bolt/stud kit 96-99 chrome		kit
45	98-89	Pinion gear spacer 54-89	24703-54B	each	103	98-490	Allen timing plug 70-99 chrome		each
46	98-305	Woodruff key 54-89	23985-54	each	104	93-618	Cylinder studs 85 & later	16837-85B	set
	98-532	T-key, pinion gear 90-99	11219	pkg 10	105	98-540	Dowel .250"x.500"		each
47	98-585	Pinion gear 77-89 Orange	24040-78	each	106	17-65	Oil pressure switch tall	26561-84	each
	98-586	Pinion gear 77-89 White	24041-78	each		17-61	Oil pressure switch short	26552-72	each
	98-587	Pinion gear 77-89 Yellow	24042-78	each	107	98-538	Screen plug	26263-80	each
	98-588	Pinion gear 77-89 Red	24043-78	each	108	95-703	O-ring 84-99	11105	pkg 10
	98-589	Pinion gear 77-89 Blue	24044-78	each	109	98-511	Spring, crankcase 70-99	24982-70	each

HARLEY DAVIDSON® 80 C.I.

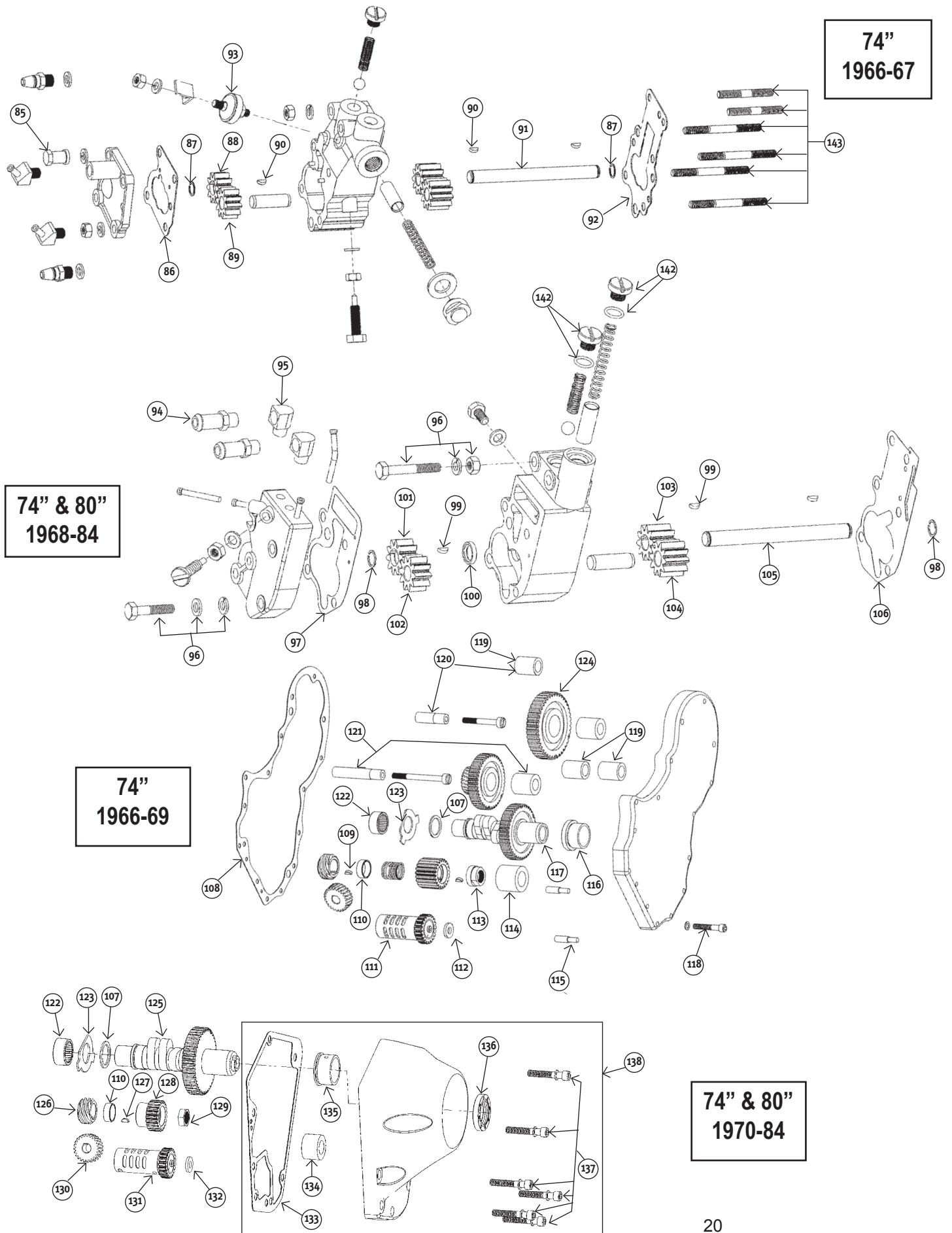
#	PART#	DESCRIPTION	OEM#	QTY
110	98-510	Screen, crankcase	24981-70	each
111	21-123	Spigot tube	63533-41	each
112	95-602	Pinion bearing 87-99 White	24626-87	each
	95-603	Pinion bearing 87-99 Green	24628-87	each
	95-604	Pinion bearing 87-99 Red	24641-87	each
	95-605	Pinion bearing 87-99 Blue	24643-87	each
113	98-531	Pinion bearing retaining ring	11177	each
114	300-453	Bushing, oil pump 36 & ltr	24641-36	each
115	95-310	Bearing race 58-92 std. size	24599-58	each
	95-430	Bearing race 58-92 +.002"	24600-58A	each
	95-429	Bearing race 93-99 std. size	24599-58B	each
116	206-54	Engine case kit 84-91 3.500" bore natural		assy.
	206-55	Engine case kit 84-91 3.500" bore black		assy.
	206-56	Engine case kit 92-99 3.500" bore natural		assy.
	206-57	Engine case kit 92-99 3.500" bore black		assy.
117	98-620	Check ball spring	26262-80	each
118	98-617	Check ball	8873	each

Every attempt has been made to insure proper fitment of our parts for the applications listed in this guide. It is the end users responsibility to exercise good judgement in the part selection, installation & maintenance of their motor when installing parts referred to in this reference guide. Midwest MC Supply has no control over the judgement of others & assumes no responsibility or liability of any nature for the failure of others to use good judgement.

HARLEY DAVIDSON® 74 & 80 C.I. SHOVELHEAD®



HARLEY DAVIDSON® 74 & 80 C.I. SHOVELHEAD®



HARLEY DAVIDSON® 74 & 80 C.I. SHOVELHEAD®

#	PART#	DESCRIPTION	OEM#	QTY	#	PART#	DESCRIPTION	OEM#	QTY
1	91-180	Valve, intake 66-84 stock replacement	18074-66	each	36	91-328	Pushrod retainer	17950-66	each
2	91-137	Valve, exhaust 48-83 stock replacement	18082-57	each	37	95-701	O-ring	11101	each
3	91-684	Valve seat, int. 66-84 2164" OD, 1.750" ID, .453" Tall Unleaded		each	38	91-512	Upper pushrod cover 36-79		kit
	91-685	Valve seat, int. 66-84 2.194" OD, 1.800" ID, .453" Tall Unleaded		each		91-634	Upper pushrod cover 79-84		kit
4	91-687	Valve seat, exh. 66-84 2.007" OD, 1.562" ID, .453" Tall Unleaded		each	39	91-321	Inner pushrod spring	17947-36	each
	91-682	Valve seat, exh. 66-84 2.016" OD, 1.625" ID, .453" Tall Unleaded		each	40	91-322	Inner pushrod washer	6762B	each
5	93-130	Front cylinder head 74" & 80" natural, stock bore, complete		each	41	95-241	O-ring 79-84	11132	each
	93-131	Rear cylinder head 74" & 80" natural, stock bore, complete		each	42	89-134	Lower pushrod cover w/necessary corks 48-79		set
	93-130M	Front cylinder head 74" & 80" natural, stock bore, bare		each		89-59	Lower pushrod cover grooved w/necessary corks		kit
	93-131M	Rear cylinder head 74" & 80" natural, stock bore, bare		each	43	95-435	Pushrod tube seal kit (square neoprene)		kit
6	91-688	Rocker box stud kit 66-84 .8 long, 2 short, 1 motor mt.		kit		95-701	O-ring	11101	each
7	91-372	Valve guide 74" 48-79 intake std.		each	44	40-523	Stainless lifter base screw kit 76-99		kit
	91-373	Valve guide 74" 48-79 intake +.001"		each		41-768	Chrome 1/4-20 screw kit 76 & later		kit
	91-374	Valve guide 74" 48-79 intake +.002"		each		41-988	8 Piece chrome 1/4-20 12 point screw kit 76 & ltr		kit
	91-375	Valve guide 74" 48-79 intake +.003"		each		91-300	16 Piece chrome screw & washer set 1/4-24 taper screws		set
	91-376	Valve guide 74" 48-79 intake +.004"		each	45	91-361	Black tappet guide front cylinder	18600-66B	each
	91-377	Valve guide 74" 48-79 exhaust +.006"		each		91-362	Black tappet guide rear cylinder	18610-66B	each
	91-355	Valve guide 80" 80-84 intake std.		each		91-526	Chrome tappet guide front cylinder	18600-66B	each
	91-234	Valve guide 80" 80-84 intake +.001		each		91-527	Chrome tappet guide rear cylinder	18610-66B	each
	91-357	Valve guide 80" 80-84 intake +.002		each		91-638	Chrome tappet guide set w/screws 1/4-20 & 1/4-24		set
	91-359	Valve guide 80" 80-84 intake +.003		each	46	78-373	Tappet block gasket rear 48-84 .020" fiber Cometic	18633-48D	pkg 10
	91-384	Valve guide 80" 80-84 intake +.004		each		78-374	Tappet block gasket front 48-84 .020" fiber Cometic	18634-48D	pkg 10
	91-385	Valve guide 80" 80-84 intake +.006		each	47	91-605	Hydraulic unit 66-84	17920-53A	each
8	91-378	Valve guide 74" 48-79 exhaust std.		each	48	91-285	Hydraulic tappet 66-84	18522-53A	each
	91-379	Valve guide 74" 48-79 exhaust +.001"		each	49	91-830	Pushrod 66-84		set
	91-380	Valve guide 74" 48-79 exhaust +.002"		each		91-831	Pushrod 66-84 for strokers .250" longer		set
	91-381	Valve guide 74" 48-79 exhaust +.003"		each	50	89-62	Upper/outer pushrod cover kit 66-84		set
	91-382	Valve guide 74" 48-79 exhaust +.004"		each	51	95-110	Oil seal, sprocket shaft 55-68	24031-55	each
	91-383	Valve guide 74" 48-79 exhaust +.006"		each		95-105	Oil seal, sprocket shaft 69-99	12026	each
	91-356	Valve guide 80" 80-84 exhaust std.		each		95-805	Oil seal, sprocket shaft 69-99	12026	each
	91-237	Valve guide 80" 80-84 exhaust +.001		each	52	98-360	Sprocket shaft spacer 69-99	24002-70	each
	91-380	Valve guide 80" 80-84 exhaust +.002		each	53	95-318	Timken engine case bearing 58-68	9029	each
	91-381	Valve guide 80" 80-84 exhaust +.003		each		95-320	Timken engine case bearing 69 & ltr.	9028	each
	91-382	Valve guide 80" 80-84 exhaust +.004		each	54	98-299	Timing plug 52-69 chrome reproduction	704	each
	91-383	Valve guide 80" 80-84 exhaust +.006		each		98-490	Timing plug 70 & ltr. chrome allen style	720	each
9	78-370	Valve guide gasket		pkg 5	55	41-880	Motor case stud kit B.T. 65-69		kit
10	91-342	Valve seal & sleeve 48-81	18196-51	each		41-881	Motor case stud kit B.T. 70-78		kit
	91-341	Valve seal & sleeve 81 & ltr.		each		41-882	Motor case stud kit B.T. 79-95		kit
11	91-657	Lower collar 48-79 stock spring travel		set	56	98-540	Dowel .250"x.500"		each
	91-658	Lower collar 48-79 +.030" spring travel		set	57	41-992	Cylinder base stud set 30-77 8 pcs.	16831-30	set
12	91-224	Valve spring set 66-84 4 inner & 4 outer		set		41-993	Cylinder base stud set 78-84 8 pcs.	16837-78	set
13	91-269	Top valve collars 66-84 set of 4		set	58	300-453	Bushing, oil pump 36 & ltr	24641-36	each
14	91-244	Valve keepers 74" & 80"	18228-36	set	59	95-310	Bearing race 58-92 std. size	24599-58	each
15	91-535	Valve spring kit w/titanium top collars .465" lift		kit		95-430	Bearing race 58-92 +.002"	24600-58A	each
	91-652	Valve spring kit w/steel top collars .465" lift		kit	60	95-488	Crank case rollers std.	9220A	pkg 100
16	93-270	Front cylinder 74" black stk. bore stk. height		each		95-489	Crank case rollers +.0002"	9221A	pkg 100
	93-271	Rear cylinder 74" black stk. bore stk. height		each		95-490	Crank case rollers +.0004"	9222A	pkg 100
	93-268	Front cylinder 80" black stk. bore stk. height		each		95-491	Crank case rollers +.0006"	9223A	pkg 100
	93-269	Rear cylinder 80" black stk. bore stk. height		each		95-492	Crank case rollers +.0008"	9224A	pkg 100
	93-261	Front cylinder black 3-5/8 bore stk. height		each		95-493	Crank case rollers +.001"	9225A	pkg 100
	93-262	Rear cylinder black 3-5/8 bore stk. height		each		95-494	Crank case rollers +.002"	9220A	pkg 100
	93-263	Front cylinder black 3-5/8 bore +.200" taller		each	61	98-538	Screen plug	26263-80	each
	93-264	Rear cylinder black 3-5/8 bore +.200" taller		each	62	98-511	Spring, crank case 70 & ltr	24982-70	each
17	93-421	Head bolt & washer kit, cad plated 48-84	6469	kit	63	98-510	Screen, crank case 70 & ltr	24981-70	each
18	41-398	Head bolt washer heat treated, cad plated		set	64	95-173	Bearing, cam 66 & ltr	9058	each
19	78-33	Cylinder base gasket front 66-84 74" or 80"	16776-63	each	65	21-123	Spigot tube	63533-41	each
	78-51	Cylinder base gasket rear 66-84 74" or 80"	16777-63	each	66	95-703	O-ring 79-84	1105	pkg 10
	78-636	Cylinder base gasket Ft & Rr 66-84 74" or 80" .020" Viton		pair	67	98-266	Retaining ring 58-86	11007	each
20	41-994	Cyl. Base stud spacer 78-84	16836-78	set	68	95-165	Rod races set of 3 41 & ltr		set
21	41-401	Base nut & washer set chrome 16 pce set		set	69	95-115	Piston pin bushing std. size	24334-36	each
22	78-61	Head gasket Ft & Rr 66-84 74" & 80" teflon	16770-66	each		95-389	Piston pin bushing +.002"		each
	78-639	Head gasket Ft & Rr 66-84 74" & 80" copper .032" Cometic		pair		95-390	Piston pin bushing +.010"		each
23	71-137	Rocker cover & feed oil lines. 66-84		kit	70	98-262	Rod assembly 41-73 74"	24281-41A	set
24	95-127	Oil line sleeve/O-ring	63529-57	each		98-323	Rod assembly 74-81 74" & 80"	24281-74	set
25	41-426	Allen rocker plug set 71-84		pkg 4		98-413	Rod assembly 81-83 80"	24281-80	set
	41-896	Allen rocker plug set 71-84		kit		98-414	Rod assembly 83 & ltr 80"	24281-83A	set
26	95-701	O-ring	11101	each	71	98-303	Crankpin nuts, locks & screws 41-81 1"-18 thread		kit
27	91-287	Rocker arm shaft	17611-66A	each	72	98-293	Sprocket shaft 65-69	24001-65	each
28	91-313	Rear exh./front int. rocker arm	17360-66	each		98-294	Sprocket shaft 70-71	24001-70	each
	91-314	Front exh./rear int. rocker arm	17375-66	each		98-295	Sprocket shaft 72-81	24001-72	each
29	95-356	Bushing	17428-57	each		98-339	Sprocket shaft 81-85	23909-80	each
30	78-632	Rocker cover gasket 66-84 .020" viton coated (Cometic)		pkg 2	73	94-137	Key sprocket shaft 56 & ltr	23985-56	each
	78-368	Rocker cover gasket 66-84 .031" fiber (Cometic)		pkg 10	74	98-271	Flywheel washer 41-70	23973-41	each
31	41-420	Rocker shaft nuts red cap 7/16-20 66-84	7872	each		98-298	Flywheel washer 70-ltr	6506	each
	41-418	Rocker shaft nuts chrome hex 7/16-20 66-84	7872	kit	75	95-259	Roller & retainer set std. aluminum	24385-40B	kit
32	40-318	Chrome rocker cover hdwre kit 66-84 18 hex nuts/18 flat wsers	7753 6016	kit		95-621	Roller & retainer set std.	24346-87A	kit
	40-547	Stainless rocker cover hdwre kit 66-84 18 hex nuts/18 flat wsers		kit	76	98-273	Key 41-81	23985-18	each
33	89-344	Rocker arm covers chrome 66-84 includes chrome spacers		set		98-475	Key 81 & ltr	11218	each
	89-389	Rocker arm covers polished 66-84 includes chrome spacers		set	77	98-265	Crank pin 74" & 80" 3 hole 41-81	23961-41	each
34	91-277	Rocker arm shim .005"		each		98-465	Crank pin 74" & 80" 1 hole 41-81	23961-41	each
	91-469	Rocker arm shim .010"		each		98-419	Crank pin 81<r 180 degree-3 hole(use late nuts 1"-20 thread)	23961-80	each
	91-470	Rocker arm shim .020"		each	78	98-424	Sprocket shaft nut 30-81 3/4"-18	24023-36	each
35	91-549	Rocker arm spacer	17452-66	each		98-423	Sprocket shaft nut 81-85 1-1/8"-16	24017-80	each

HARLEY DAVIDSON® 74 & 80 C.I. SHOVELHEAD®

#	PART#	DESCRIPTION	OEM#	QTY	#	PART#	DESCRIPTION	OEM#	QTY
79	98-424	Pinion shaft nut 30-81 3/4"-18	24023-36	each	116	95-108	Bushing	25581-36	each
	98-422	Pinion shaft nut 81-89	24016-80	each	117	114-17	Cam 48-69 Andrews BH Hyd. Mild perf.		each
80	98-288	Crank pin nut 41-81 1"-18	23966-54A	each	118	41-780	Timing cover screw kit allen, chrome		kit
	98-421	Crank pin nut 83 & ltr 1"-20	23969-83	each		91-301	Timing cover screw kit slotted, chrome		kit
81	98-274	Key 41-81	23985-12	each	119	95-343	Bushing	25785-30A	each
	98-475	Key 81 & ltr	11218	each	120	91-310	Stud & bushing kit 36-69	25791-36	kit
82	98-256	Pinion gear shaft 58-72	24006-58	each	121	95-418	Stud & bushing kit 36-69	25856-36	kit
	98-291	Pinion gear shaft 73-81	24006-43	each	122	95-173	Bearing, cam 66 & ltr	9058	each
	98-355	Pinion gear shaft 81-86	24006-80	each	123	98-372	Washer, cam thrust 58-99	25550-57	each
83	95-476	Long roller 36-72 18 used, std. use w/steel cage	9171A	pkg 100	124	98-480	Idler gear w/lightening holes 36-69	25775-36	each
	95-477	Long roller 36-72 18 used, .0002 os use w/steel cage	9172A	pkg 100	125	114-15	Cam 70-77 Andrews BH		each
	95-478	Long roller 36-72 18 used, .0004 os use w/steel cage	9173A	pkg 100		114-16	Cam 78-84 Andrews BH		each
	95-479	Long roller 36-72 18 used, .0006 os use w/steel cage	9174A	pkg 100	126	98-359	Oil pump drive gear 6T use only w/24T driven gear		each
	95-480	Long roller 36-72 18 used, .0008 os use w/steel cage	9175A	pkg 100	127	98-305	Key 54-89	23985-54	each
	95-481	Long roller 36-72 18 used, .001 os use w/steel cage	9176A	pkg 100	128	98-443	Pinion gear 54-77 Orange	24010	each
	95-482	Long roller 73-86 18 used, std. use w/aluminum cage	9186	pkg 100		98-445	Pinion gear 54-77 Red	24010	each
	95-483	Long roller 73-86 18 used, .0002 os use w/aluminum cage	9180	pkg 100		98-446	Pinion gear 54-77 Blue	24010	each
	95-484	Long roller 73-86 18 used, .0004 os use w/aluminum cage	9181	pkg 100		98-447	Pinion gear 54-77 Green	24010	each
	95-485	Long roller 73-86 18 used, .0006 os use w/aluminum cage	9182	pkg 100		98-448	Pinion gear 54-77 White	24010	each
	95-486	Long roller 73-86 18 used, .0008 os use w/aluminum cage	9183	pkg 100		98-449	Pinion gear 54-77 Brown	24010	each
	95-487	Long roller 73-86 18 used, .001 os use w/aluminum cage	9184	pkg 100		98-450	Pinion gear 54-77 Yellow	24010	each
84	95-463	Short roller 36-72 36 used, std. use w/steel cage	9101A	pkg 100		98-451	Pinion gear 77-89 Orange	24040	each
	95-464	Short roller 36-72 36 used, .0002 os use w/steel cage	9102A	pkg 100		98-586	Pinion gear 77-89 White	24041	each
	95-465	Short roller 36-72 36 used, .0004 os use w/steel cage	9103A	pkg 100		98-587	Pinion gear 77-89 Yellow	24042	each
	95-466	Short roller 36-72 36 used, .0006 os use w/steel cage	9104A	pkg 100		98-588	Pinion gear 77-89 Red	24043	each
	95-467	Short roller 36-72 36 used, .0008 os use w/steel cage	9105A	pkg 100		98-589	Pinion gear 77-89 Blue	24044	each
	95-468	Short roller 36-72 36 used, .001 os use w/steel cage	9106A	pkg 100		98-456	Pinion gear 77-89 Green	24045	each
	95-520	Short roller 73-86 36 used, .0002 os use w/aluminum cage	9450A	pkg 100		98-457	Pinion gear 77-89 Black	24046	each
	95-513	Short roller 73-86 36 used, std. use w/aluminum cage	9441A	pkg 100	129	98-302	Pinion gear shaft nut 54-89	24023-54	each
	95-514	Short roller 73-86 36 used, .0002 os use w/aluminum cage	9442A	pkg 100	130	98-358	Oil pump driven gear 73-95 24T	26345-73	each
	95-515	Short roller 73-86 36 used, .0004 os use w/aluminum cage	9443A	pkg 100	131	98-495	Breather gear 48-77	25313-73	each
	95-516	Short roller 73-86 36 used, .0006 os use w/aluminum cage	9444A	pkg 100		98-496	Breather gear 48-77 +.030"	25313-73	each
	95-517	Short roller 73-86 36 used, .0008 os use w/aluminum cage	9445A	pkg 100		98-512	Breather gear 77-99	25313-77A.B	each
	95-518	Short roller 73-86 36 used, .0015 os use w/aluminum cage	9415	pkg 100		98-494	Breather gear 77-99 +.030"	25313-77A.B	each
	95-519	Short roller 73-86 36 used, .001 os use w/aluminum cage	9446A	pkg 100	132	98-75	Breather gear spacer 50-79 .110"	25316-52	each
85	41-400	Nut for 36-67 chrome	24831-41	each		98-76	Breather gear spacer 50-79 .115"	25313-50	each
86	78-389	Cover gasket 50-67	26257-50A	pkg 5		98-77	Breather gear spacer 50-79 .120"	25314-50	each
87	98-325	Retaining ring	26348-36	each		98-78	Breather gear spacer 50-79 .125"	25315-50	each
	98-329	Retaining ring eyelet style	11002	each		98-80	Breather gear spacer 79 & ltr .110"	25320-79	each
88	98-66	Drive gear 41 & ltr	26328-74	each		98-81	Breather gear spacer 79 & ltr .115"	25321-79	each
89	98-65	Idler gear 62 & ltr	26326-62A	each		98-82	Breather gear spacer 79 & ltr .120"	25322-79	each
90	98-272	Key	26348-15	each		98-83	Breather gear spacer 79 & ltr .125"	25323-79	each
91	98-309	Drive shaft	26346-36	each		98-84	Breather gear spacer 79 & ltr .130"	25325-79	each
92	78-385	Body gasket 41-67	26245-41	pkg 5		98-85	Breather gear spacer 79 & ltr .135"	25326-79	each
93	17-61	Oil pressure switch 74" & 80" 41-85	26551-39C	each		98-86	Breather gear spacer 79 & ltr .140"	25327-79	each
94	21-123	spigot tube	63533-41	each		98-87	Breather gear spacer 79 & ltr .145"	25328-79	each
95	21-185	spigot elbow		each		98-88	Breather gear spacer 79 & ltr .150"		each
96	41-771	Oil pump mounting kit 68-77		kit	133	78-378	Gasket, cam cover 70-84 Comet	25225-70B	pkg 5
	41-772	Oil pump mounting kit 78-91		kit	134	95-341	Bushing, pinion 73-92	25582-73	each
97	78-392	Oil pump cover gasket 68-80 fiber	26258-58D	pkg 10	135	95-340	Bushing, cam	25581-70	each
	78-397	Oil pump cover gasket 80-84 fiber	26276-80A	pkg 10	136	95-222	Oil seal	83162-51	each
98	98-325	Retaining ring	26348-36	each	137	40-534	Cam cover allen screw kit 71 & ltr		kit
99	98-272	Key	26348-15	each	138	88-53	Cam cover 73-92 chrome w/hdwre & gaskets		each
100	95-221	Oil seal	26227-58	each	139	93-800	Pistons 74" 66-79 8.5 to 1 moly coated std. bore		each
101	98-66	Feed drive gear	26328-74	each		93-801	Pistons 74" 66-79 8.5 to 1 moly coated +.010"		each
102	98-65	Feed idler gear	26326-62A	each		93-802	Pistons 74" 66-79 8.5 to 1 moly coated +.020"		each
103	98-63	Return drive gear	26315-68A	each		93-803	Pistons 74" 66-79 8.5 to 1 moly coated +.030"		each
104	98-64	Return idler gear	26317-68A	each		93-804	Pistons 74" 66-79 8.5 to 1 moly coated +.040"		each
105	98-334	Drive shaft 68 & ltr	26346-70	each		93-806	Pistons 80" 80-84 8.5to 1 moly coated std. bore		each
106	78-387	Oil pump body gasket 68-80	26246-68D	pkg 10		93-807	Pistons 80" 80-84 8.5to 1 moly coated +.010"		each
107	98-374	Cam shim .050" 36-87	25550-36	each		93-808	Pistons 80" 80-84 8.5to 1 moly coated +.020"		each
	98-375	Cam shim .055" 36-87	25551-36	each		93-809	Pistons 80" 80-84 8.5to 1 moly coated +.030"		each
	98-376	Cam shim .060" 36-87	25552-36	each		93-810	Pistons 80" 80-84 8.5to 1 moly coated +.040"		each
	98-377	Cam shim .065" 36-87	25553-36	each	140	93-330	Rings 74" std. bore Hastings		pair
	98-378	Cam shim .070" 36-87	25554-36	each		93-331	Rings 74" +.010" Hastings		pair
	98-379	Cam shim .075" 36-87	25555-36	each		93-332	Rings 74" +.020" Hastings		pair
	98-380	Cam shim .080" 36-87	25556-36	each		93-333	Rings 74" +.030" Hastings		pair
	98-381	Cam shim .085" 36-87	25557-36	each		93-334	Rings 74" +.040" Hastings		pair
	98-382	Cam shim .090" 36-87	25558-36	each		93-338	Rings 80" std. bore Hastings		pair
	98-383	Cam shim .095" 36-87	25559-36	each		93-339	Rings 80" +.010" Hastings		pair
	98-384	Cam shim .100" 36-87		each		93-340	Rings 80" +.020" Hastings		pair
108	78-377	Cam cover gasket	25225-36	pkg 5		93-341	Rings 80" +.030" Hastings		pair
109	98-305	Key 54-89	23985-54	each		93-342	Rings 80" +.040" Hastings		pair
110	98-89	Pinion gear spacer 54-89	24703-54B	each	141	206-25	Motor case 70-84 large bore breather, 74" & 80"		assy
111	98-495	Breather gear 48-77 std.	25313-73	each	142	41-997	Oil pump plug set w/Oring 70-80		set
	98-496	Breather gear 48-77 +.030"	25313-73	each		41-998	Oil pump plug set w/Oring 81 & ltr		set
112	98-75	Breather gear spacer .110"	25316-52	each	143	41-989	Oil pump mounting hardware 36-67		kit
	98-76	Breather gear spacer .115"	25313-50	each					
	98-77	Breather gear spacer .120"	25314-50	each					
	98-78	Breather gear spacer .125"	25315-50	each					
113	98-302	Pinion gear shaft nut 54-89	24023-54	each					
114	95-342	Bushing, gear shaft 54-73	25582-54	each					
115	98-487	Dowel, cam cover 30 & ltr	275	each					